



WEIGHT

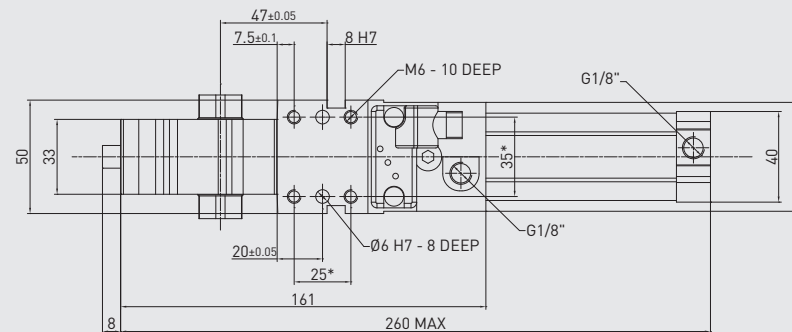
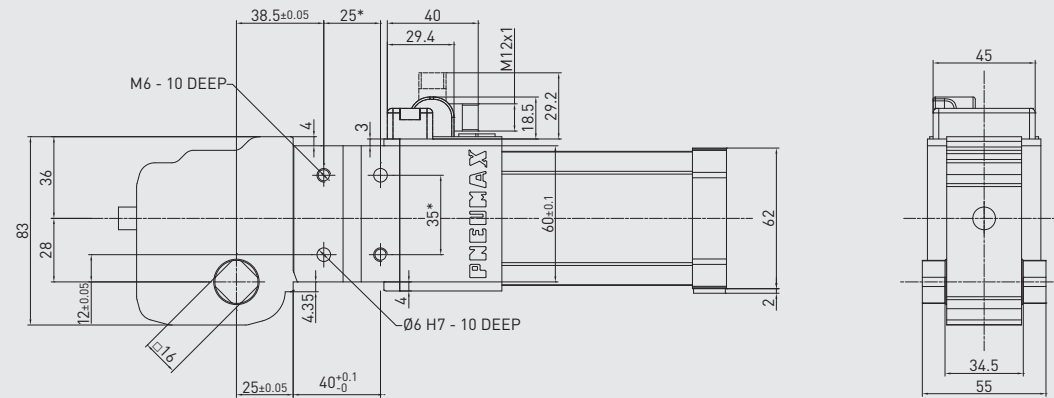


* DIMENSIONAL TOLERANCE FOR DOWEL HOLES: ± 0.02
 DIMENSIONAL TOLERANCE FOR THREADED HOLES: ± 0.1

REV. 00 - 31/03/2015

C1P40E

Power clamp
 European std
 40 mm bore



Technical features

Manual release button to open the linkage when air pressure is removed during setup.
 Pneumatic **ports on both sides** of the cylinder.

Operating features

Operating pressure from 2 to 8 bar

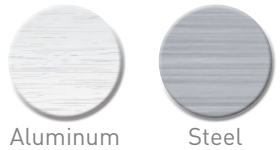
Lubrication all the devices are lubricated for life at the factory. Inline air lubrication isn't required

Subject to change
 without notice



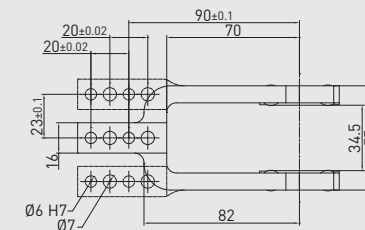
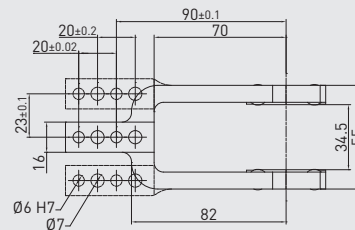
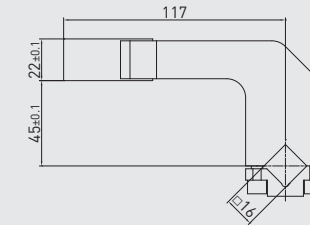
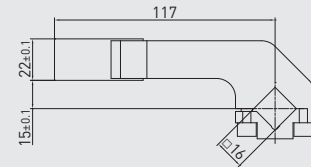
CLAMPING ARMS

16 mm shaft



Aluminum

Steel



16 mm shaft – 15 mm offset



PART NO.	MATERIAL	VERSION	WEIGHT (kg)	MAX OP. ANGLE POS. 1	MAX OP. ANGLE POS. 2	MAX OP. ANGLE POS. 3	MAX OP. ANGLE POS. 4
B1601	Aluminum	Central	0.24	135°	135°	N/A	45°
Q1601	Steel	Central	0.44	135°	135°	N/A	45°
B1602	Aluminum	Right	0.24	135°	135°	N/A	45°
Q1602	Steel	Right	0.46	135°	135°	N/A	45°
B1603	Aluminum	Left	0.24	135°	135°	N/A	45°
Q1603	Steel	Left	0.46	135°	135°	N/A	45°

Screws: M6x20 Tightening torque: 10 N m

16 mm shaft – 45 mm offset



PART NO.	MATERIAL	VERSION	WEIGHT (kg)	MAX OP. ANGLE POS. 1	MAX OP. ANGLE POS. 2	MAX OP. ANGLE POS. 3	MAX OP. ANGLE POS. 4
B1604	Aluminum	Central	0.3	135°	135°	N/A	N/A
Q1604	Steel	Central	0.55	135°	135°	N/A	N/A
B1605	Aluminum	Right	0.3	135°	135°	N/A	N/A
Q1605	Steel	Right	0.57	135°	135°	N/A	N/A
B1606	Aluminum	Left	0.3	135°	135°	N/A	N/A
Q1606	Steel	Left	0.57	135°	135°	N/A	N/A

Screws: M6x20 Tightening torque: 10 N m

Subject to change without notice