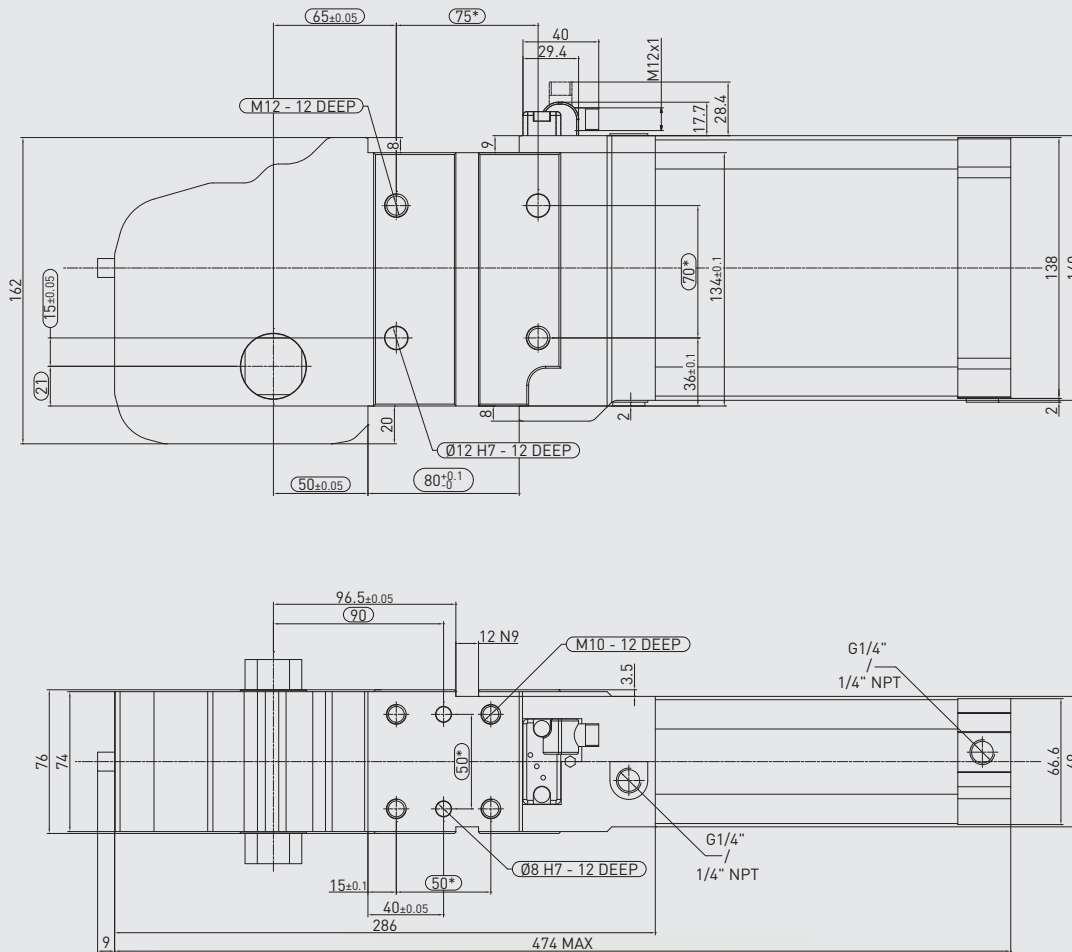




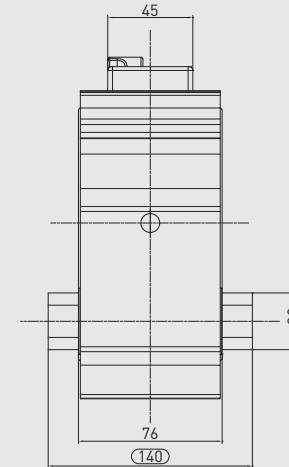
INNOVATION DOWN TO THE LAST DETAIL

* DIMENSIONAL TOLERANCE FOR DOWEL HOLES: ± 0.02
DIMENSIONAL TOLERANCE FOR THREADED HOLES: ± 0.1
NAAMS DIMENSIONAL VALUES ARE HIGHLIGHTED

REV. 01 - 31/07/2015



WEIGHT



GLOBAL STANDARD COMPONENTS
NAAMS

C2P80E

Power clamp

NAAMS std

80 mm bore

Technical features

Manual release button to open the linkage when air pressure is removed during setup.
Pneumatic **ports on both sides** of the cylinder.

Operating features

Operating pressure from 2 to 8 bar

Lubrication all the devices are lubricated for life at the factory. Inline air lubrication isn't required

Subject to change without notice





GLOBAL STANDARD COMPONENTS
NAAMS

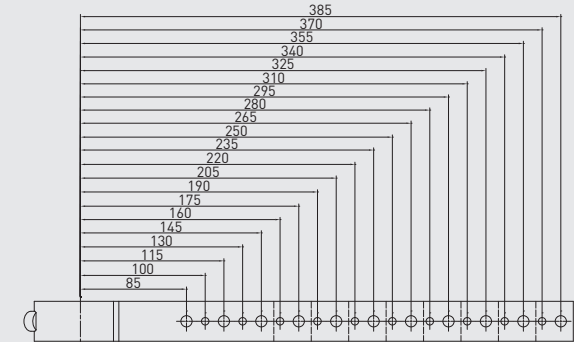
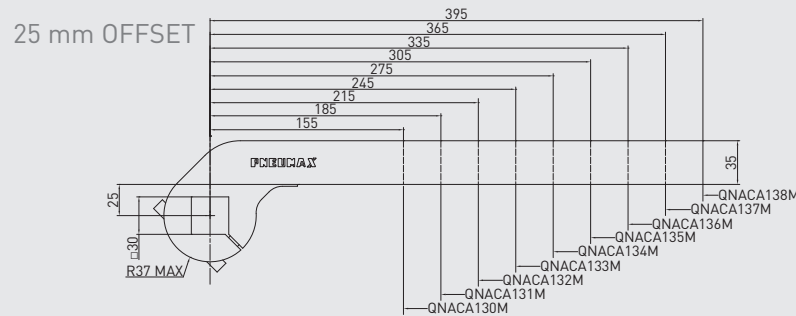
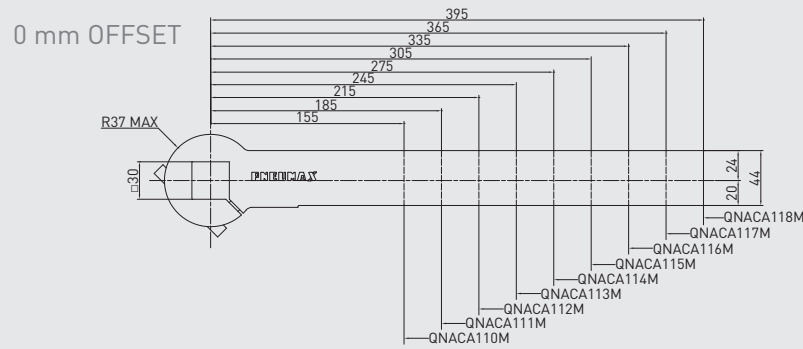
CLAMPING ARMS

30 mm shaft



Steel

REV. 00 - 31/03/2015



30 mm shaft – 0 mm offset



| PART NO. | MATERIAL | LENGTH | WEIGHT (kg) | MAX OP. ANGLE POS. 1 | MAX OP. ANGLE POS. 2 | MAX OP. ANGLE POS. 3 | MAX OP. ANGLE POS. 4 |
|-----------|----------|--------|-------------|----------------------|----------------------|----------------------|----------------------|
| QNACA110M | Steel | 155 | 1.41 | 135° | 135° | 135° | 135° |
| QNACA111M | Steel | 185 | 1.58 | 135° | 135° | 135° | 135° |
| QNACA112M | Steel | 215 | 1.76 | 135° | 135° | 135° | 135° |
| QNACA113M | Steel | 245 | 1.93 | 135° | 135° | 135° | 135° |
| QNACA114M | Steel | 275 | 2.1 | 135° | 135° | 135° | 135° |
| QNACA115M | Steel | 305 | 2.27 | 135° | 135° | 135° | 135° |
| QNACA116M | Steel | 335 | 2.45 | 135° | 135° | 135° | 135° |
| QNACA117M | Steel | 365 | 2.62 | 135° | 135° | 135° | 135° |
| QNACA118M | Steel | 395 | 2.8 | 135° | 135° | 135° | 135° |

Screws: M10x20 Tightening torque: 50 N m



30 mm shaft – 25 mm offset



| PART NO. | MATERIAL | LENGTH | WEIGHT (kg) | MAX OP. ANGLE POS. 1 | MAX OP. ANGLE POS. 2 | MAX OP. ANGLE POS. 3 | MAX OP. ANGLE POS. 4 |
|-----------|----------|--------|-------------|----------------------|----------------------|----------------------|----------------------|
| QNACA130M | Steel | 155 | 1.24 | 135° | 135° | 135° | 135° |
| QNACA131M | Steel | 185 | 1.39 | 135° | 135° | 135° | 135° |
| QNACA132M | Steel | 215 | 1.54 | 135° | 135° | 135° | 135° |
| QNACA133M | Steel | 245 | 1.69 | 135° | 135° | 135° | 135° |
| QNACA134M | Steel | 275 | 1.84 | 135° | 135° | 135° | 135° |
| QNACA135M | Steel | 305 | 2 | 135° | 135° | 135° | 135° |
| QNACA136M | Steel | 335 | 2.14 | 135° | 135° | 135° | 135° |
| QNACA137M | Steel | 365 | 2.29 | 135° | 135° | 135° | 135° |
| QNACA138M | Steel | 395 | 2.45 | 135° | 135° | 135° | 135° |

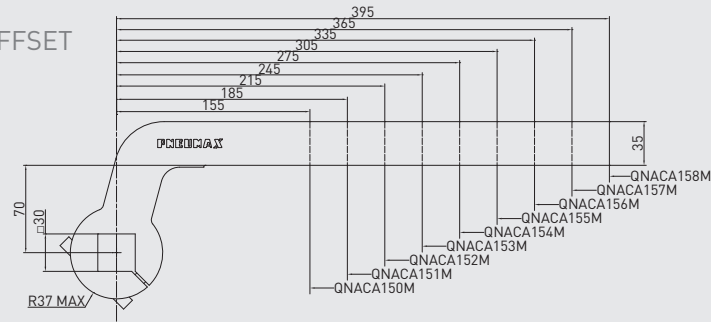
Screws: M10x20 Tightening torque: 50 N m



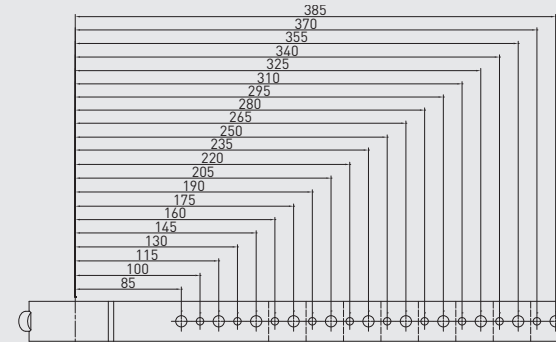
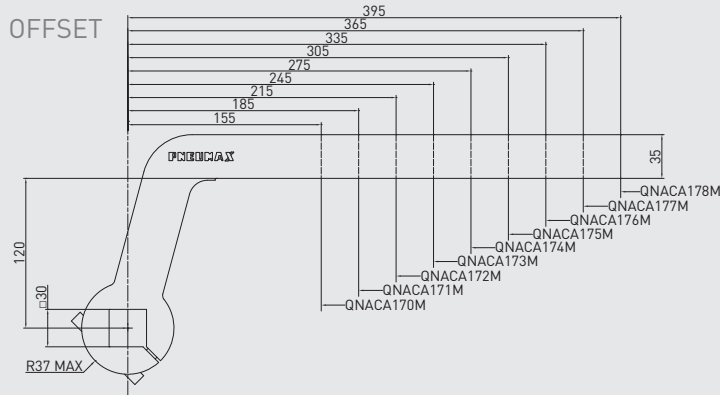
Subject to change without notice

REV. 00 - 31/03/2015

70 mm OFFSET



120 mm OFFSET



GLOBAL STANDARD COMPONENTS
NAAMS

CLAMPING ARMS

30 mm shaft



30 mm shaft – 70 mm offset



| PART NO. | MATERIAL | LENGTH | WEIGHT (kg) | MAX OP. ANGLE POS. 1 | MAX OP. ANGLE POS. 2 | MAX OP. ANGLE POS. 3 | MAX OP. ANGLE POS. 4 |
|-----------|----------|--------|-------------|----------------------|----------------------|----------------------|----------------------|
| QNACA150M | Steel | 155 | 1.7 | 135° | 135° | 135° | 135° |
| QNACA151M | Steel | 185 | 1.85 | 135° | 135° | 135° | 135° |
| QNACA152M | Steel | 215 | 2 | 135° | 135° | 135° | 135° |
| QNACA153M | Steel | 245 | 2.15 | 135° | 135° | 135° | 135° |
| QNACA154M | Steel | 275 | 2.3 | 135° | 135° | 135° | 135° |
| QNACA155M | Steel | 305 | 2.45 | 135° | 135° | 135° | 135° |
| QNACA156M | Steel | 335 | 2.6 | 135° | 135° | 135° | 135° |
| QNACA157M | Steel | 365 | 2.76 | 135° | 135° | 135° | 135° |
| QNACA158M | Steel | 395 | 2.92 | 135° | 135° | 135° | 135° |

Screws: M10x20 Tightening torque: 50 N m



30 mm shaft – 120 mm offset



| PART NO. | MATERIAL | LENGTH | WEIGHT (kg) | MAX OP. ANGLE POS. 1 | MAX OP. ANGLE POS. 2 | MAX OP. ANGLE POS. 3 | MAX OP. ANGLE POS. 4 |
|-----------|----------|--------|-------------|----------------------|----------------------|----------------------|----------------------|
| QNACA170M | Steel | 155 | 1.97 | 135° | 135° | 135° | 135° |
| QNACA171M | Steel | 185 | 2.12 | 135° | 135° | 135° | 135° |
| QNACA172M | Steel | 215 | 2.27 | 135° | 135° | 135° | 135° |
| QNACA173M | Steel | 245 | 2.42 | 135° | 135° | 135° | 135° |
| QNACA174M | Steel | 275 | 2.57 | 135° | 135° | 135° | 135° |
| QNACA175M | Steel | 305 | 2.72 | 135° | 135° | 135° | 135° |
| QNACA176M | Steel | 335 | 2.87 | 135° | 135° | 135° | 135° |
| QNACA177M | Steel | 365 | 3.02 | 135° | 135° | 135° | 135° |
| QNACA178M | Steel | 395 | 3.19 | 135° | 135° | 135° | 135° |

Screws: M10x20 Tightening torque: 50 N m



Subject to change without notice

